

Laurie Riccadonna

Eternal Bloom

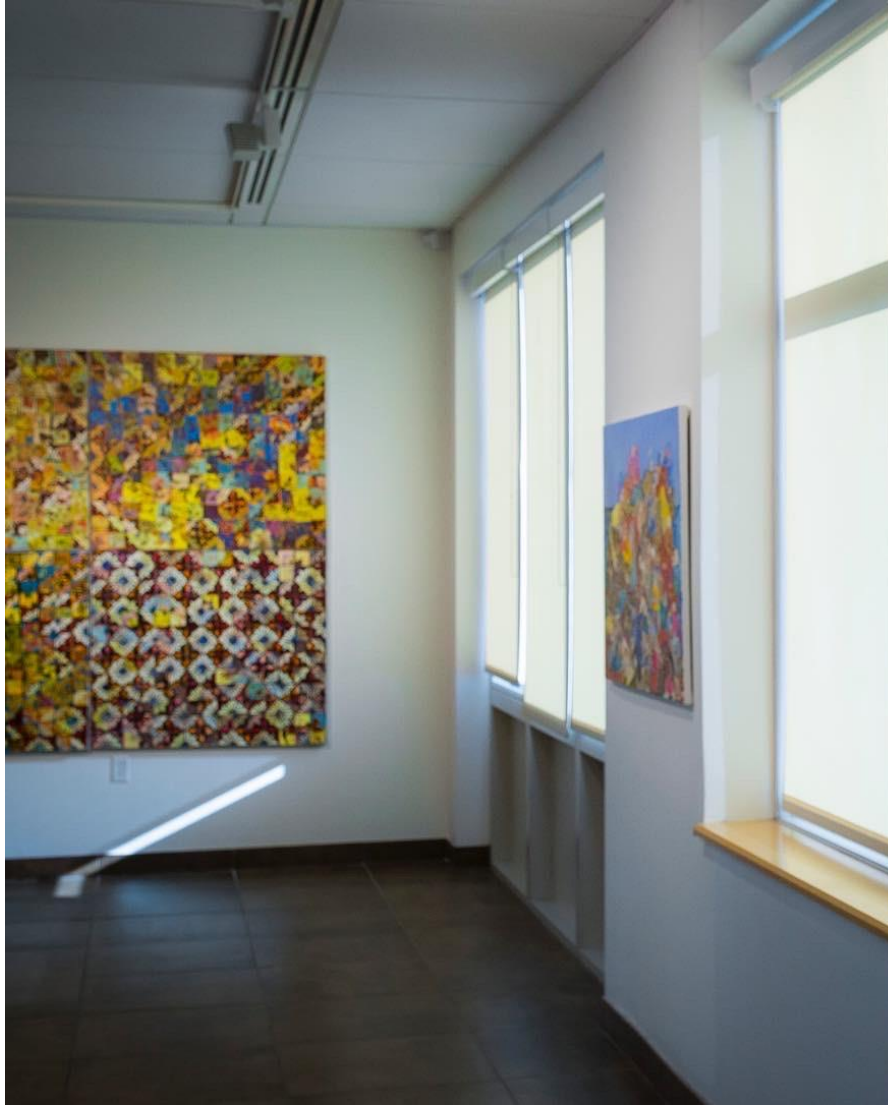
A mid-career retrospective exhibition at the Dineen Hull Gallery,
Hudson County Community College
February 4 - June 4, 2021

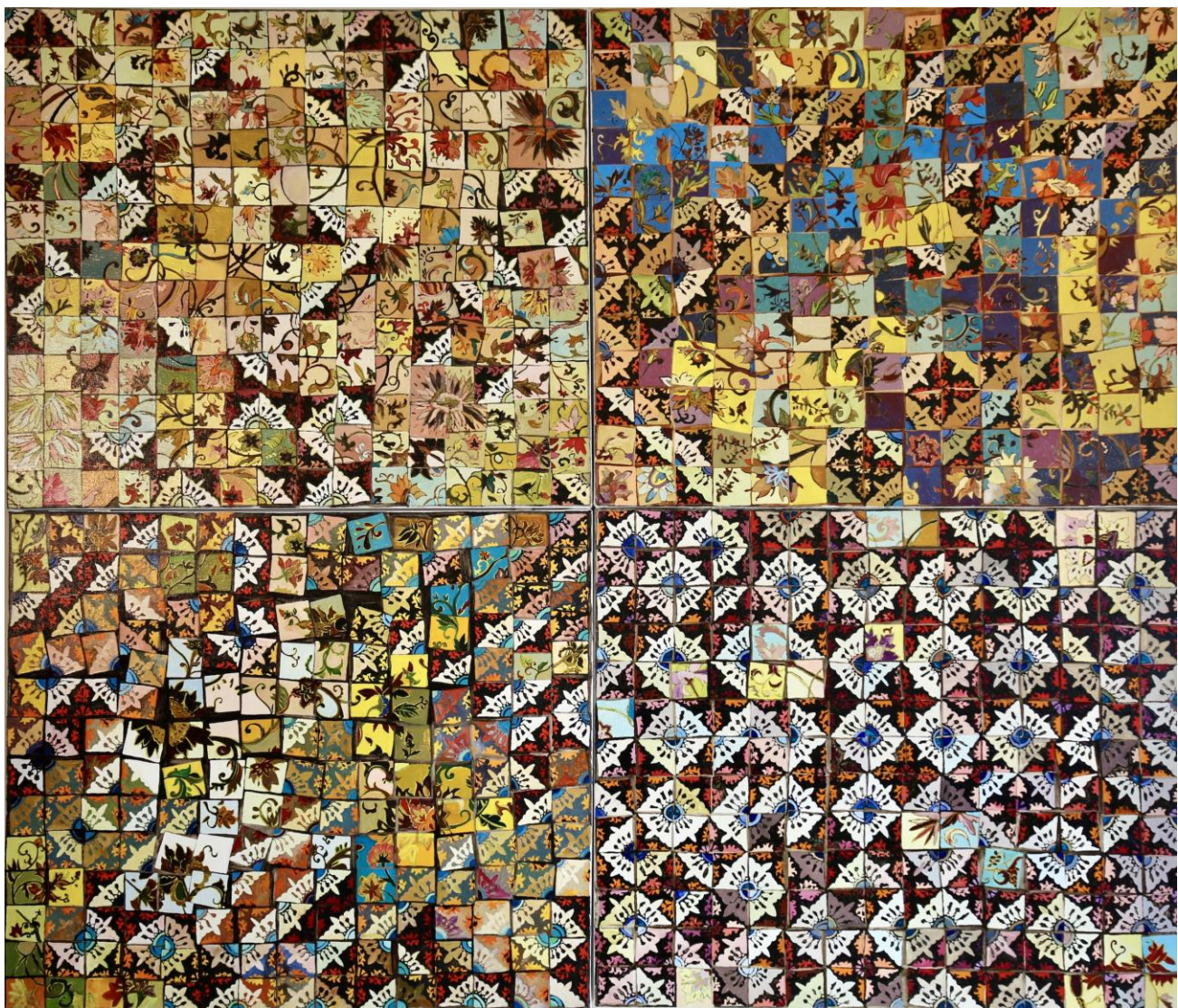
The show will then travel to the Amelie A. Wallace Gallery at
State University of New York at Old Westbury











September, 1999, Oil on Canvas, a work in 4 panels, 72 x 84 inches



Garden #1, 2000, Oil on Canvas, 72 x 72 inches



Garden #2, 2000, Oil on Canvas, 72 x 72 inches



Silver Lake, 2008, Oil on Canvas, 30 x 53.5 inches



Latitude 44.5, 2008, Oil on Canvas, 46.5 x 84 inches



Broken, 2008, Oil on Canvas, 15 x 24 inches



Winter Fence, 2009, Oil on Canvas, 14 x 20 inches



Gardenias, 2010, Oil on Canvas, 24 x 29 inches



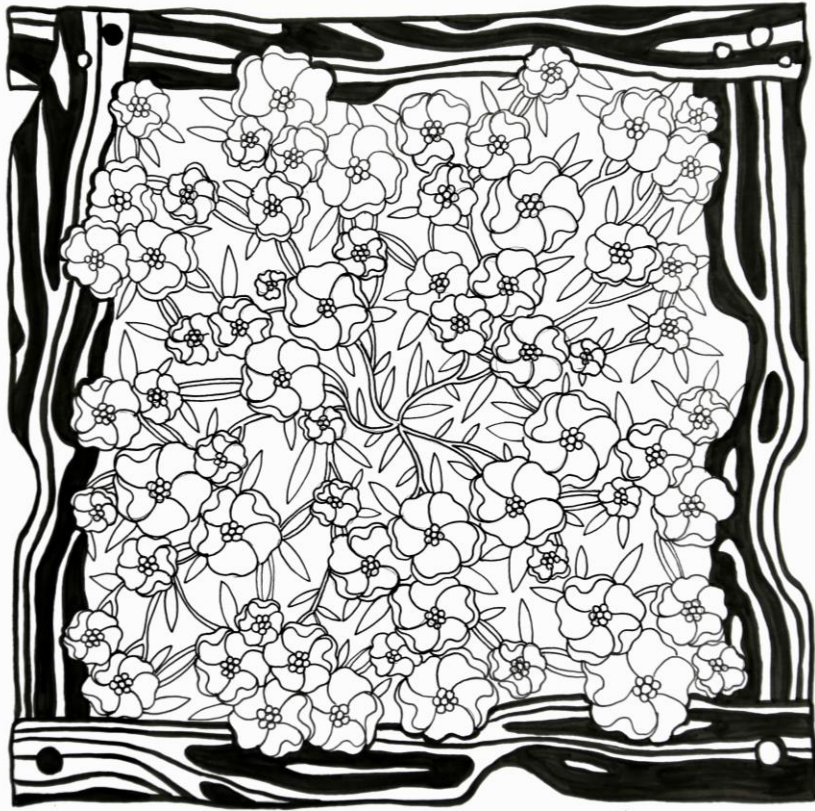
Dragonfly Study, 2011, Watercolor and Gouache on Paper, 10 x 10 inches



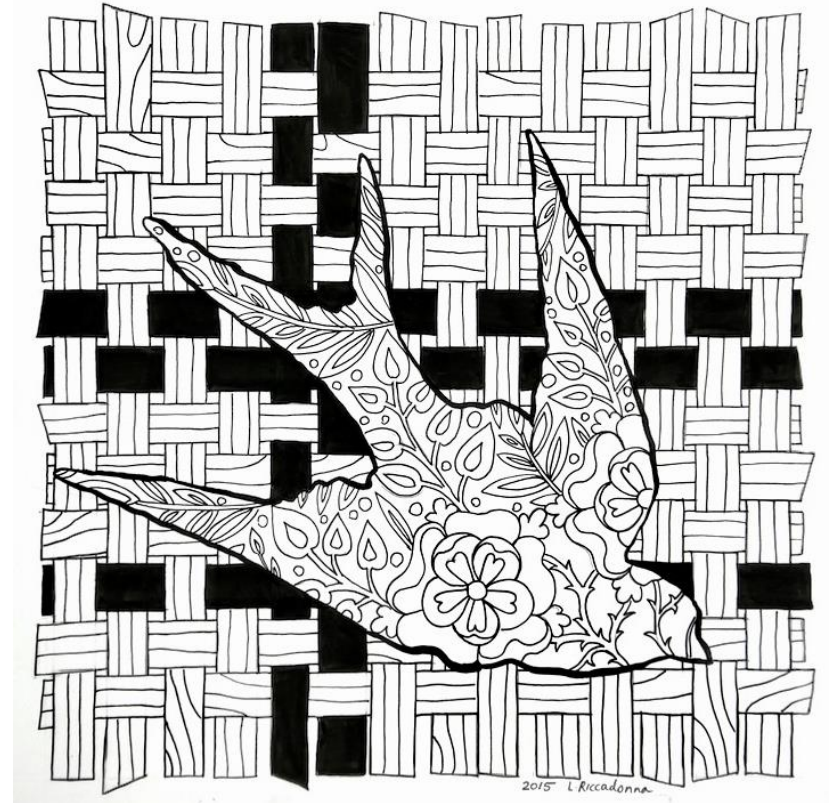
Broken Study, 2015, Ink on Bristol, 7 x 7 inches



Forget Me Nots with Hands, 2015, Ink on Bristol, 7 x 7 inches



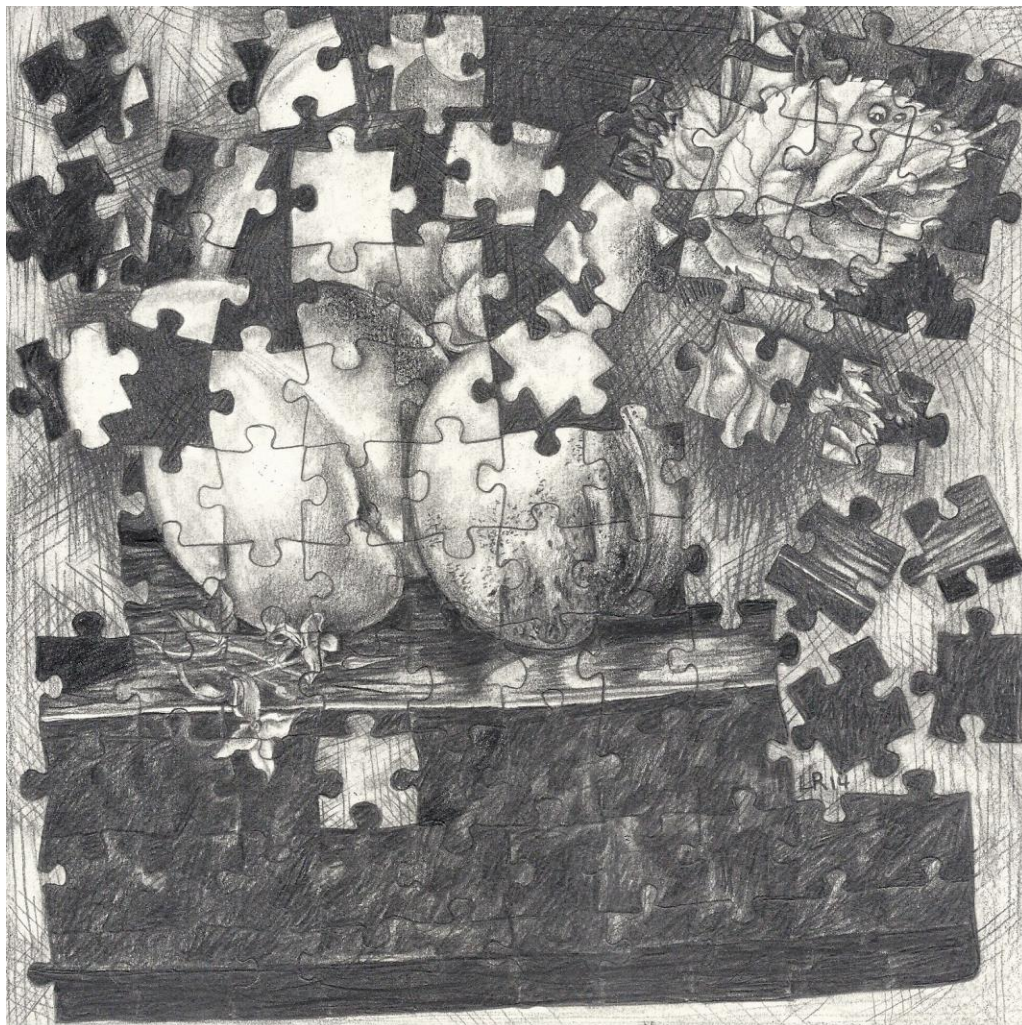
Bloom, 2015, Ink on Bristol, 7 x 7 inches



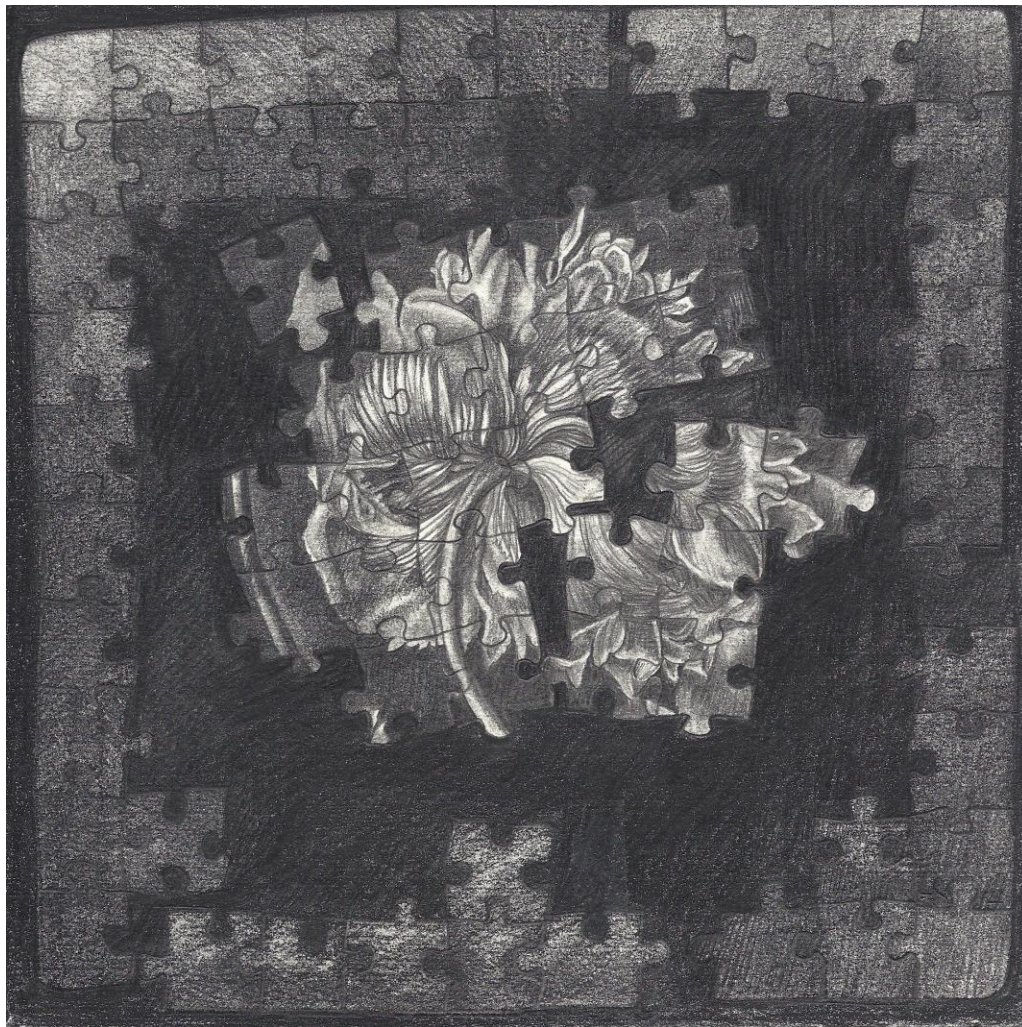
Swallow, 2015, Ink on Bristol, 7 x 7 inches



Roses, 2016, Graphite on Paper, 7.5 x 7.5 inches



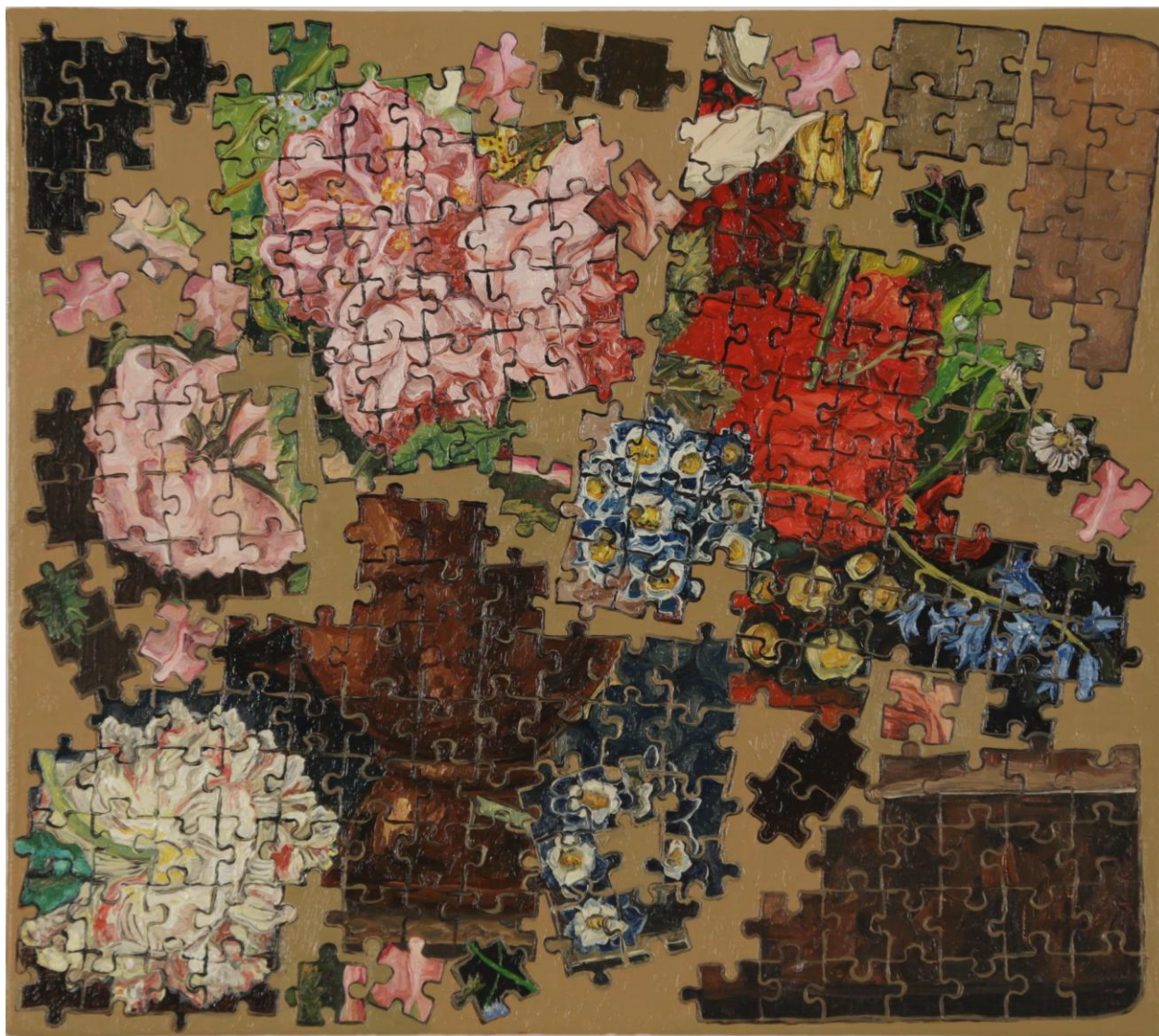
Peaches, 2015, Graphite on Paper, 7.5 x 7.5 inches



Red, 2015, Graphite on Paper, 7.5 x 7.5 inches



Bouquet, 2017, Oil on Canvas, 22.5 x 28.5 inches



Bouquet with Roses, 2017, Oil on Canvas 11.5 x 13 inches



Bouquet with Iris, 2016, Oil on Canvas, 11.5 x 16.5 inches



Large Bouquet, 2017, Oil on Canvas, 40 x 50 inches



Throw-Away, 2019, Oil on Canvas, 21 x 29 inches



Caps and Shells, 2019, Oil on Canvas, 9 x 12.5 inches

Eternal Bloom

Essay by Michael Lee

Pattern, Accumulation and the Question of Time

www.lauriericcadonna.com