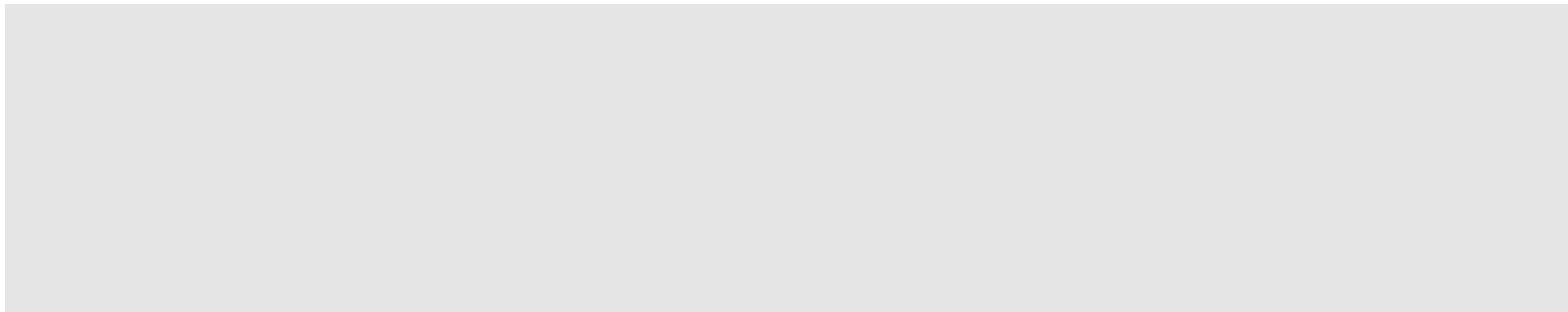
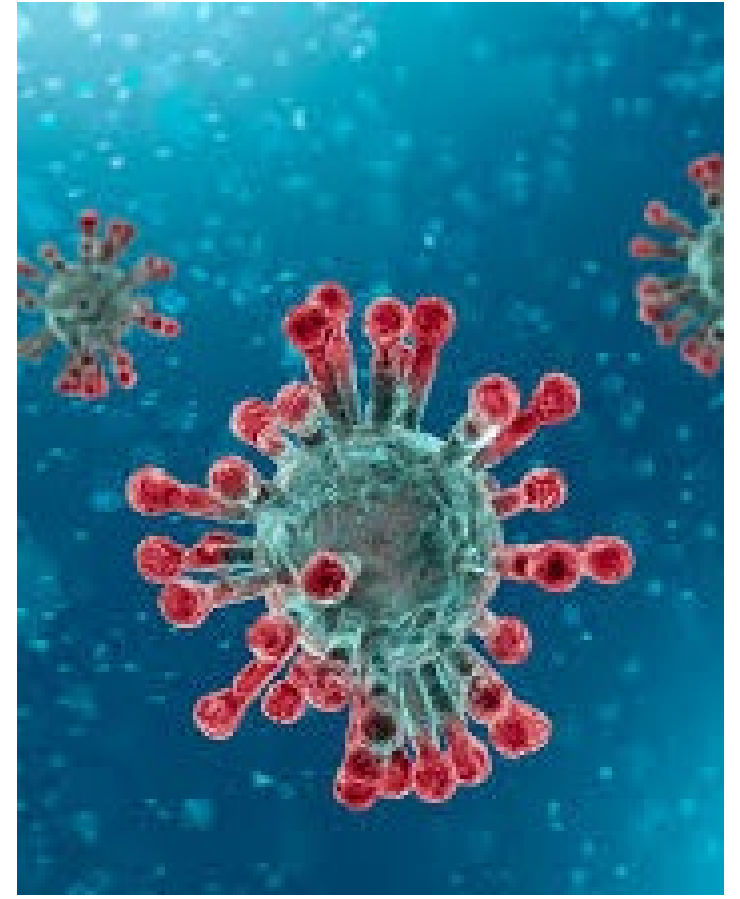


COVID 19 & FACE MASKS



Masks are to protect
others from you.

Types of Masks:



- Different types for different purposes:
- Medical Grade:
 - Procedure Masks
 - OR Sterile Masks
 - Isolation Masks (N95)
- Homemade face coverings

N 95 Face Mask



- Medical Grade
 - Used by medical personnel in the care of COVID patients



- All masks or face coverings must cover the nose and mouth.
- Located from the bridge of the nose to cup of the chin.
- Secured in place with ties or bands.

How to use a mask:

When to use a mask:

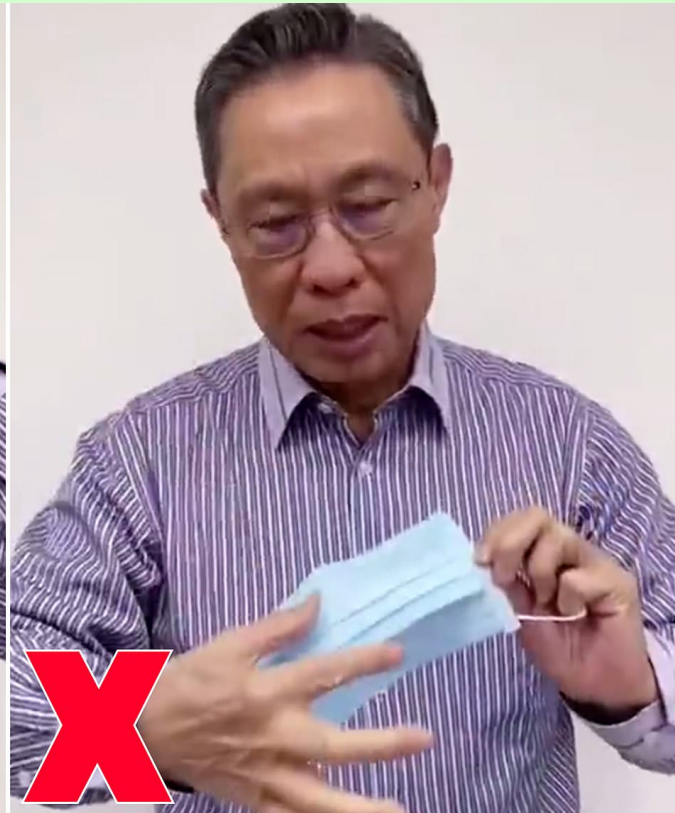
- Masks should be used when in 'community' settings such as shopping.
- Masks do NOT replace social distancing or handwashing.



Tips to Remember:

- Masks should fit SECURLY in place. You should NOT constantly touch or adjust the mask once in place.
- You should NOT reuse a mask more that twice; do not wash or microwave commercially made masks.
- Handmade face coverings should be laundered after use.

Removing your mask



- Carefully remove your mask **WITHOUT** touching the outside.
- Wash your hands after handling your mask.
- Dispose or launder after use.

Resources:

- The Center of Disease Control
 - www.cdc.gov/coronavirus
- NJ Department of Health
 - <https://covid19.nj.gov/index.html>

